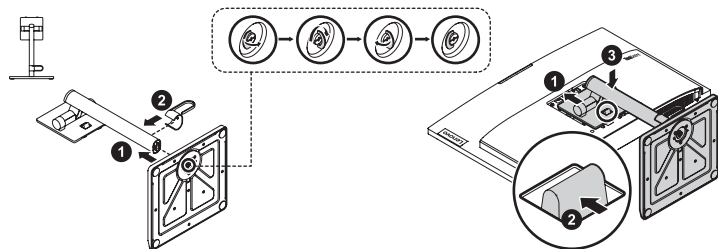
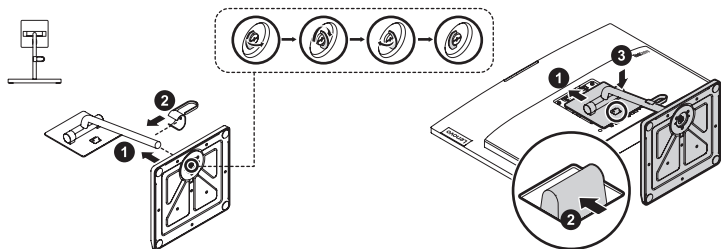
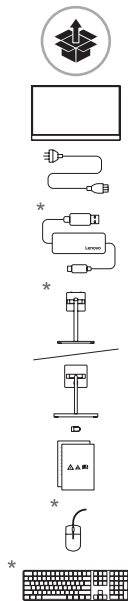
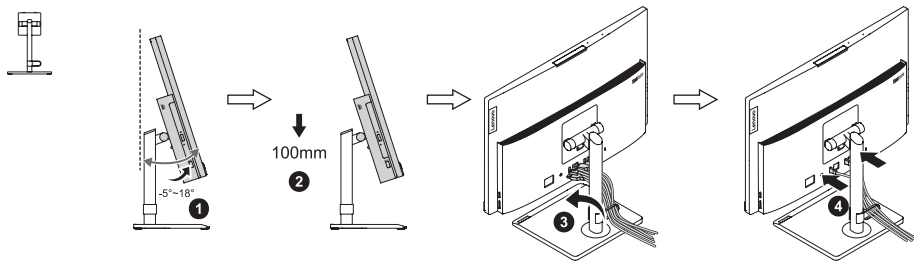
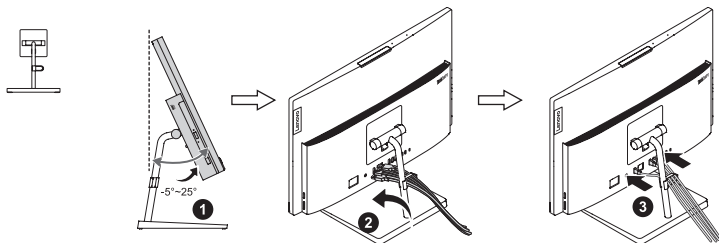


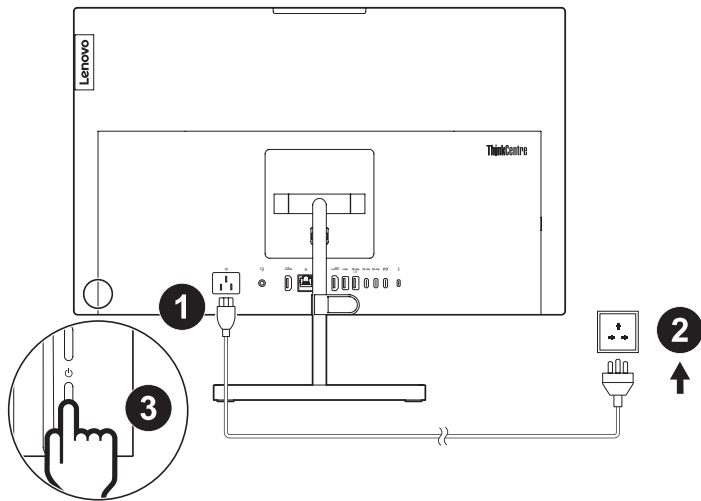


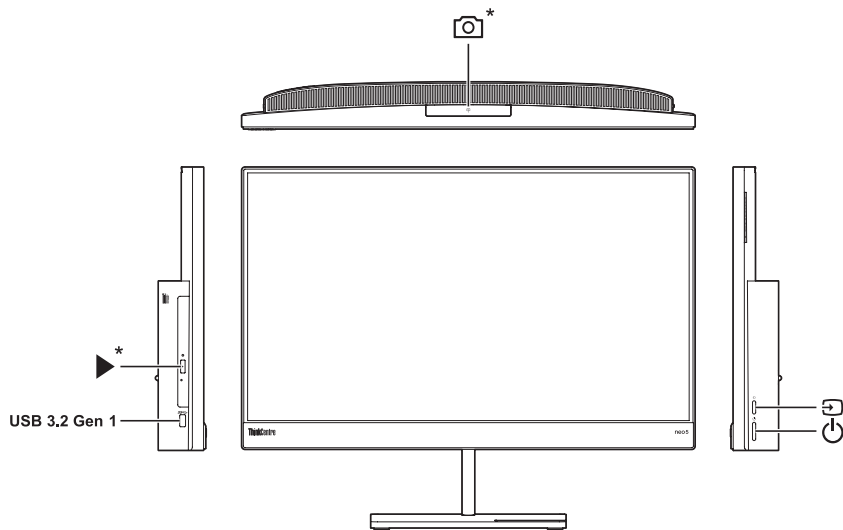
**ThinkCentre** neo 50a 24 Gen 3



\* For selected models

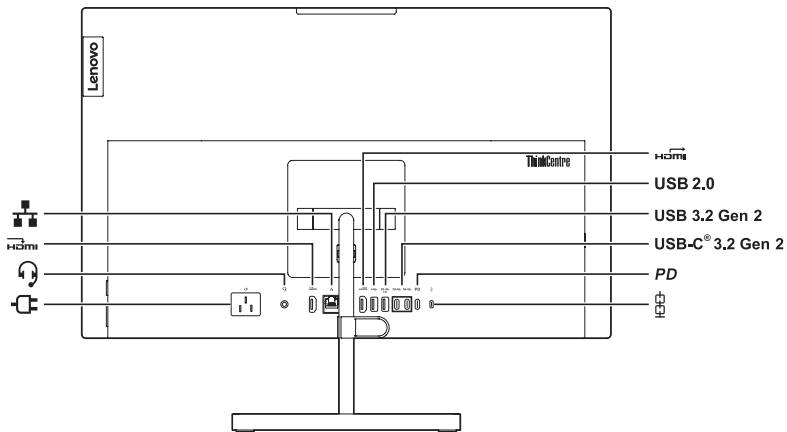






↺ Switch button

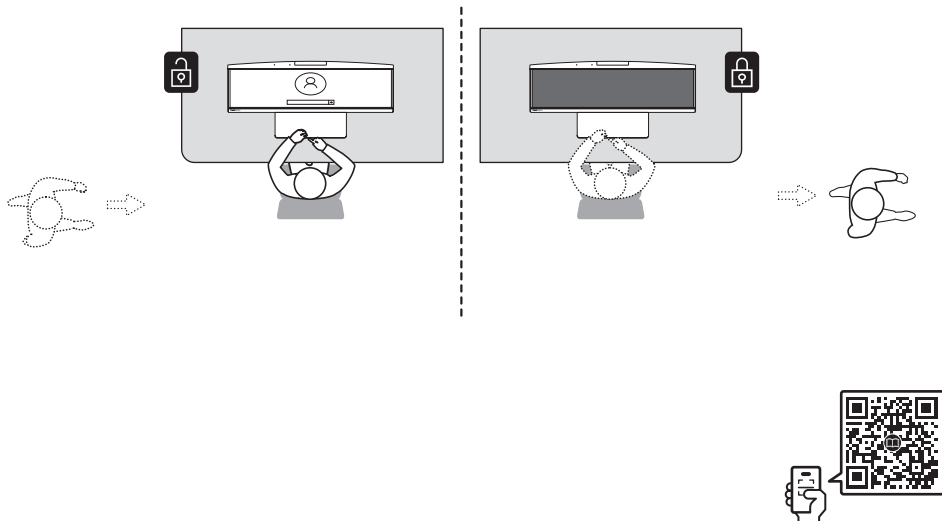
\* For selected models



**PD** USB-C (power) connector

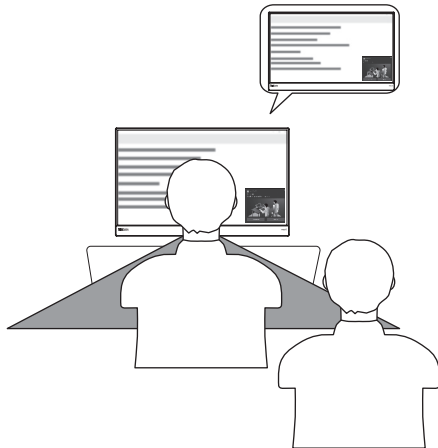
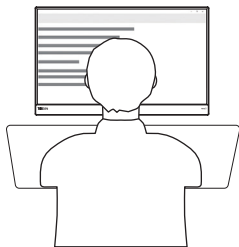


## Human Presence Detection





Privacy Protection



## [English]

### USB transfer rate

Read the statement on USB transfer rate in the *User Guide*. To access the *User Guide*, go to <https://pcsupport.lenovo.com>.

### European Union (EU) / United Kingdom (UK) — radio frequency and power

This radio equipment operates with the following frequency bands and maximum radio-frequency power:

Technology	Frequency band [MHz]	Maximum transmit power
WLAN 802.11b/g/n/ax	2400 - 2483.5	< 20 dBm
WLAN 802.11a/n/ac/ax	5150 - 5725	< 23 dBm
WLAN 802.11a/n/ac/ax	5725 - 5875	< 13.98 dBm
Bluetooth BR/EDR/LE	2400 - 2483.5	< 20 dBm

**Note:** Not all wireless bands may be enabled depending on your product configuration.

Usage of this device is limited to indoor locations in the bands 5150 - 5350 MHz.

**Note (only for ThinkCentre neo 50a 24 Gen 3 with liftable stand):** This equipment is not suitable for use in locations where children are likely to be present, avoid hurting your child when machine falling down.

LENOVO, LENOVO logo, THINKCENTRE and THINKCENTRE logo are trademarks of Lenovo. The terms HDMI and HDMI High-Definition Multimedia Interface are trademarks or registered trademarks of HDMI Licensing LLC in the United States and other countries. All other trademarks are the property of their respective owners.

**First Edition (August 2022)**  
**© Copyright Lenovo 2022.**

LIMITED AND RESTRICTED RIGHTS NOTICE: If data or software is delivered pursuant to a General Services Administration "GSA" contract, use, reproduction, or disclosure is subject to restrictions set forth in Contract No. GS-35F-05925.

Reduce | Reuse | Recycle

