

# DisplaySync Pro™

## Introduction

Graphics professionals often utilize multiple computers as part of their standard workflow. In addition to the basic USB hub that is built into its MultiSync® PA Series displays, NEC has developed DisplaySync Pro, a technology that allows you to control two computers with one keyboard and mouse—utilizing the display to switch between computers. When combined with picture-in-picture or side-by-side modes, the MultiSync PA Series can boost productivity and reduce desktop clutter.

## How it works

DisplaySync Pro functions like a virtual keyboard video mouse (KVM) switch inside the display. When a keyboard and mouse are connected to the USB hub, combined with a display input from each computer, the display can automatically switch control from one computer to the other simply by using the INPUT button on the front of the display (see image at right). The keyboard and mouse controls are automatically redirected to the appropriate computer.



## Setting it up

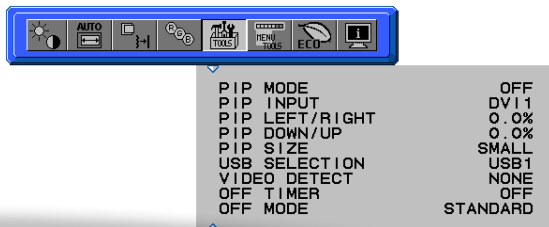
The back of the display has two upstream and two downstream USB ports (see image at right). There is also a downstream USB port on the side of the display as well. To properly set up two computers to your MultiSync PA Series display, follow these instructions:



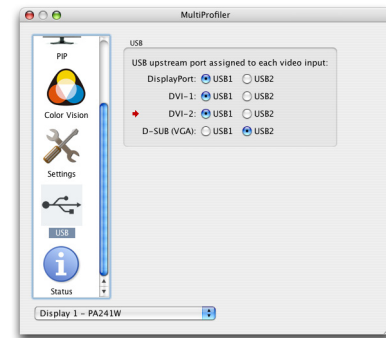
1. Connect video and USB cables from each computer to the back of the display, taking note of which computer is connected to which port.
2. Connect the keyboard and mouse to any of the downstream USB ports on the display.
3. Using the INPUT button on the front of the display, change to the video input of the first computer.

If using MultiProfiler, skip to Step 7.

4. If using the On Screen Display (OSD\*), set the USB SELECTION value to the USB port that was connected to the first computer in step 1. For example, if the first computer is connected to USB1 and the display from the first computer is showing, set the USB SELECTION value to USB1 (see image below).



5. Using the INPUT button on the front of the display, change to the video input of the second computer.
6. Using the OSD, set the USB SELECTION value to the USB port that was connected to the second computer in step 1.
7. If using MultiProfiler, select the radio buttons that match the USB ports with the display ports assigned in step 1.



Use the INPUT button on the display to change between computers and the keyboard and mouse will now control each computer.

Once this is configured, NEC recommends disabling the BLANK SIGNAL SKIP setting. With this setting enabled, a computer that has put the display to sleep will not be able to be selected as an input.

To disable BLANK SIGNAL SKIP, use the following steps:

1. Press the Menu button on the display
2. Navigate to the RGB tab, select ADVANCED SETTING
3. Navigate to Tag 8
4. Navigate down to BLANK SIGNAL SKIP, change to OFF
5. Press the EXIT button to exit the OSD

*This technology paper was published in and based on information as of June 2011. Technical information is subject to change.*